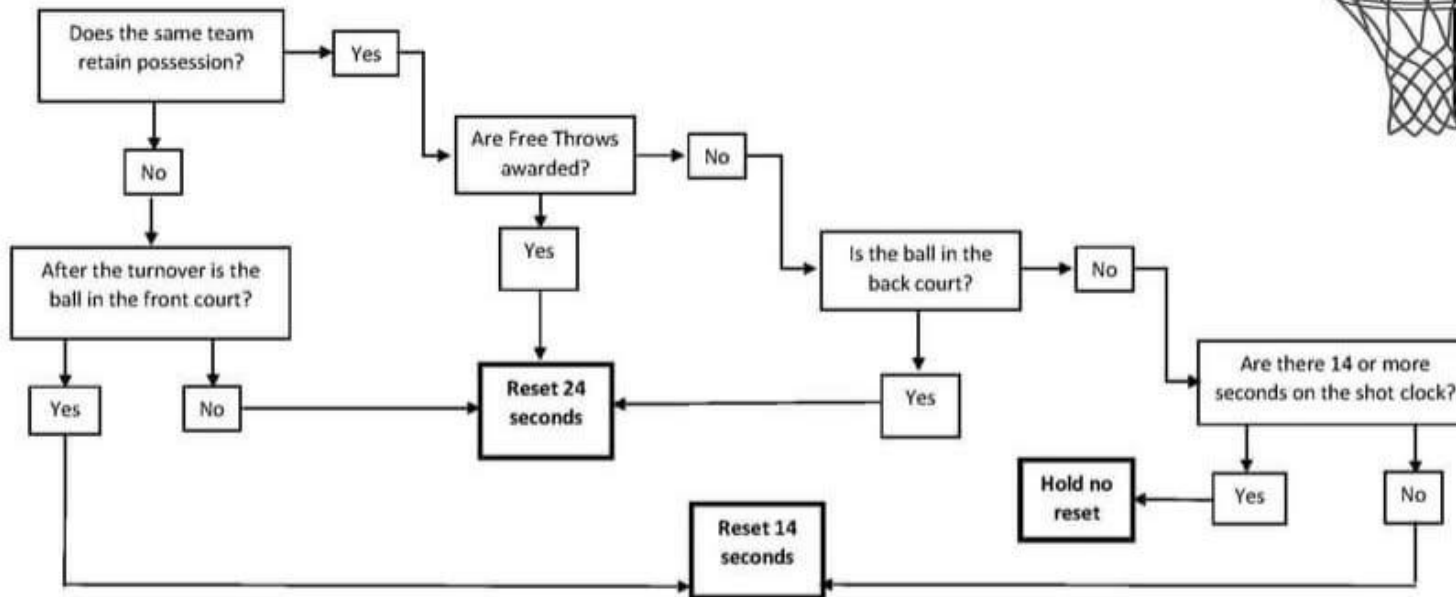


The Shot Clock Decision Tree



When a foul or violation occurs



In General Play

Ball hits the ring reset to 24

If a team **GAINS** control of the ball because of a steal, interception, or a **DEFENSIVE REBOUND**, the shot clock is reset to 24 (anywhere on the court).

If a team **RETAINS** control of the ball after an **OFFENSIVE REBOUND**, the shot clock is reset to 14 seconds.

In the last 2 minutes of the 4th quarter and any overtime periods, a coach who has requested a Time Out is entitled to advance the ball to the front court, then the shot clock will be reset as follows:

- If they choose **NOT** to advance the ball, the shot clock will stay on the value when the timeout was called.
- If they choose to advance the ball, it will be the lower of the current value or 14 seconds

